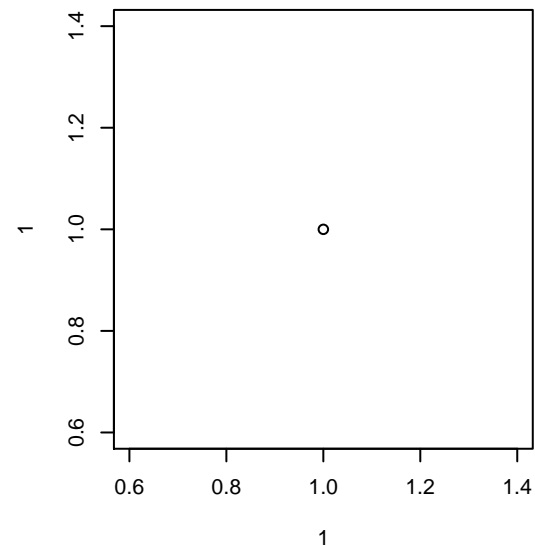


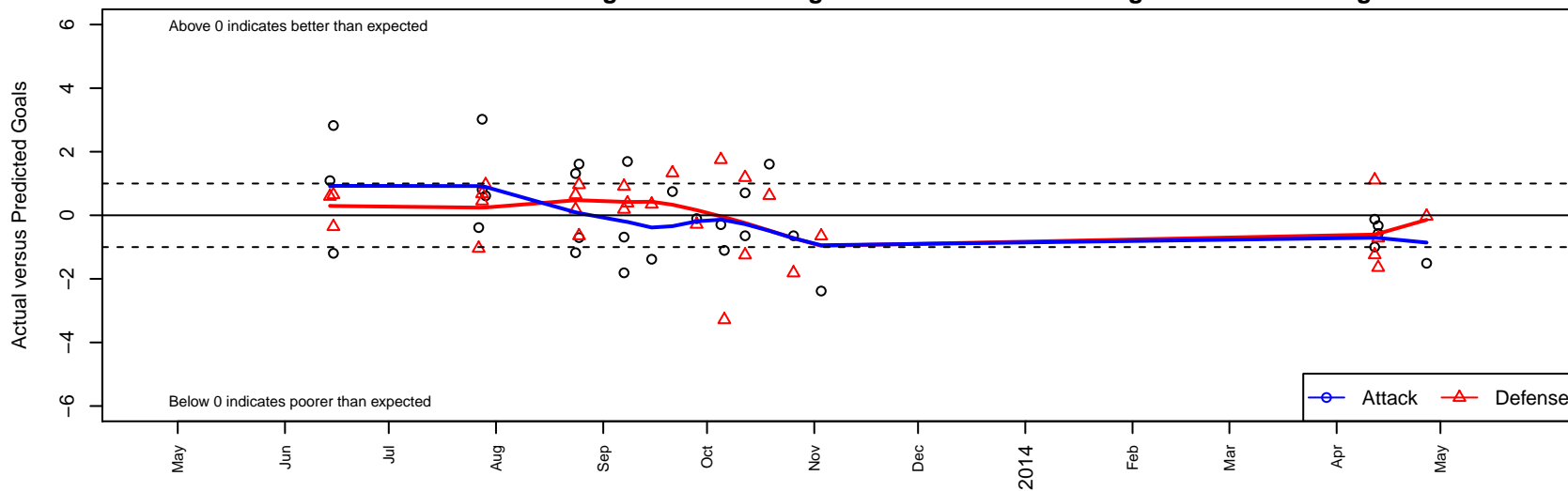
Spokane Foxes Emerald G01

Spokane Foxes FC
 Spokane, WA
 G01 total strength=601
 attack=0.53 defense=0.48
 fall league = PSPL-Inland Div 2 U13
 notes= Lafferty 2013
 alt names used:
 Spokane Foxes Emerald G01

Venues played:
 Olivia Chaffin GU12 B
 River City Cup Girls U-12 Silver U12
 River City Challenge Girls U-12 Gold U12
 Pend Oreille Cup GU12 (11v11)
 PSPL-Inland Div 2 U13
 WA Cup GU12 Gold/Silver U12



Spokane Foxes Emerald G01
 Dots are actual minus expected GF (blue circles) and GA (red triangles).
 Blue line is smoothed change in attack strength. Red is smoothed change in defense strength.



	date	home		away		venue	pred.home	pred.away
326	2014-04-27	CWSA Navy G01	2	Spokane Foxes Emerald G01	0	WA Cup GU12 Gold/Silver U12	1.97	1.51
726	2014-04-13	Spokane Foxes Emerald G01	0	Spokane Foxes Red G01	4	WA Cup GU12 Gold/Silver U12	0.33	3.28
730	2014-04-13	Spokane Foxes Emerald G01	0	Spokane Foxes Platinum G01	5	WA Cup GU12 Gold/Silver U12	0.57	3.36
399	2014-04-12	Spokane Foxes Emerald G01	0	CDA Sting White Caps G01	4	WA Cup GU12 Gold/Silver U12	1.00	2.76
703	2014-04-12	Wenatchee Fire Black G01	0	Spokane Foxes Emerald G01	1	WA Cup GU12 Gold/Silver U12	1.11	1.12
634	2013-11-03	FC Spokane Grey G00	2	Spokane Foxes Emerald G01	0	PSPL-Inland Div 2 U13	1.35	2.38
404	2013-10-26	Spokane Scotties Burkart G00	3	Spokane Foxes Emerald G01	1	PSPL-Inland Div 2 U13	1.19	1.64
257	2013-10-19	CDA Sting Fire G00	1	Spokane Foxes Emerald G01	3	PSPL-Inland Div 2 U13	1.62	1.39
076	2013-10-12	Spokane Foxes Emerald G01	1	Spokane Scotties Burkart G00	0	PSPL-Inland Div 2 U13	1.64	1.19
077	2013-10-12	Spokane Foxes Emerald G01	1	Cobra Rapids G00	5	PSPL-Inland Div 2 U13	0.29	3.75
967	2013-10-06	Spokane Foxes Silver G00	5	Spokane Foxes Emerald G01	0	PSPL-Inland Div 2 U13	1.72	1.10
380	2013-10-05	Cobra Rapids G00	2	Spokane Foxes Emerald G01	0	PSPL-Inland Div 2 U13	3.75	0.29
703	2013-09-28	Spokane Foxes Emerald G01	1	Spokane Foxes Silver G00	2	PSPL-Inland Div 2 U13	1.10	1.72
556	2013-09-21	Spokane Foxes Emerald G01	2	Sabers White G00	0	PSPL-Inland Div 2 U13	1.25	1.33
464	2013-09-15	Spokane Foxes Emerald G01	1	FC Spokane Grey G00	1	PSPL-Inland Div 2 U13	2.38	1.35
150	2013-09-08	Spokane Foxes Emerald G01	3	Sandpoint Strikers G01	1	Pend Oreille Cup GU12 (11v11)	1.31	1.39
282	2013-09-07	Spokane Foxes Emerald G01	1	SSC Shadow United Benjamin G01	1	Pend Oreille Cup GU12 (11v11)	1.69	1.19
286	2013-09-07	Spokane Foxes Emerald G01	0	Lakeland Nighthawks McDevitt G01	0	Pend Oreille Cup GU12 (11v11)	1.81	0.91
945	2013-08-25	Spokane Foxes Emerald G01	4	Breakers Andersson G01	0	River City Challenge Girls U-12 Gold U12	2.39	0.96
947	2013-08-25	Spokane Foxes Emerald G01	1	SSC Shadow Elite Rennaker-Cooper G01	2	River City Challenge Girls U-12 Gold U12	1.70	1.36
907	2013-08-24	Spokane Foxes Emerald G01	1	FC Spokane Black G01	0	River City Challenge Girls U-12 Gold U12	2.18	0.65
910	2013-08-24	Spokane Foxes Emerald G01	3	SSC Shadow United Benjamin G01	1	River City Challenge Girls U-12 Gold U12	1.69	1.19
437	2013-07-29	Spokane Foxes Emerald G01	3	Breakers Andersson G01	0	River City Cup Girls U-12 Silver U12	2.39	0.96
433	2013-07-28	Spokane Foxes Emerald G01	9	FC Spokane Grey G01	0	River City Cup Girls U-12 Silver U12	5.98	0.45
434	2013-07-28	SSC Shadow Elite Blackburn G01	0	Spokane Foxes Emerald G01	6	River City Cup Girls U-12 Silver U12	0.68	5.19
409	2013-07-27	Spokane Foxes Emerald G01	2	Breakers Andersson G01	2	River City Cup Girls U-12 Silver U12	2.39	0.96
901	2013-06-15	Sabers Delpizzo G01	1	Spokane Foxes Emerald G01	3	Olivia Chaffin GU12 B	0.64	4.20
904	2013-06-15	Spokane Foxes Emerald G01	5	FC Spokane Black G01	0	Olivia Chaffin GU12 B	2.18	0.65

	date	home		away		venue	pred.home	pred.away
3884	2013-06-14	XiFA G2020 G01	3	Spokane Foxes Emerald G01	2	Olivia Chaffin GU12 B	3.60	0.91